

**Programmes After Market Services (P.A.M.S.)  
Technical Documentation  
NME-2A Series Transceivers**

**Non-Serviceable  
Accessories**

[This page intentionally left blank]

## Contents

	<b>Page No</b>
List of Non-Serviceable Accessories .....	5
Mounting Bracket MBE-2 .....	5
Specification .....	5
View of Mounting Bracket .....	5
Assembly Parts .....	5
Handset Cradle CRE-1 .....	6
Specification .....	6
View of Handset Cradle .....	6
Assembly Parts .....	6
Mounting Plate MKE-1 .....	7
Specification .....	7
View of Mounting Plate .....	7
Assembly Parts .....	7
Swivel Mounting Plate HHS-1 .....	8
Specification .....	8
Exploded view of Swivel Mounting Plate .....	8
Assembly Parts .....	8
System Cable SCM-1/SCM-3 .....	9
Specification .....	9
View of System Cable .....	9
Assembly Parts .....	9
Vehicle Installation Cable DKS-3 .....	10
Specification .....	10
View of Vehicle Installation Cable .....	10
Assembly Parts .....	10
Handsfree Microphone HFM-14 .....	11
Specification .....	11
View of HFM-14 .....	11
Assembly Parts .....	11
Handsfree Speaker HFS-10 .....	12
Specification .....	12
View of HFS-10 .....	12
Assembly Parts .....	12
Extension Cable XCM-2 .....	13
Specification .....	13

View of XCM-2 .....	13
Assembly Parts .....	13
SIM Card Reader CAE-2 .....	14
Specification .....	14
View of XCM-2 .....	14
Assembly Parts .....	14

## List of Non-Serviceable Accessories

### Mounting Bracket MBE-2

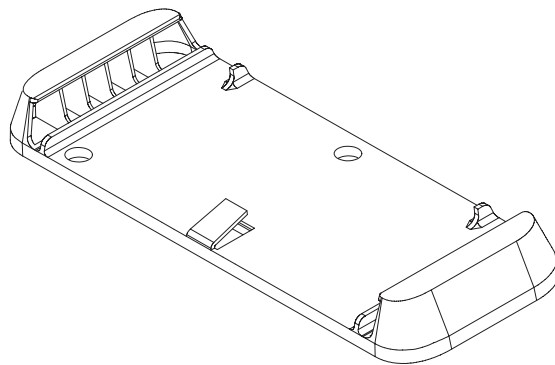
The MBE-2 mounting bracket provides a method of fixing the mobile phone to the vehicle interior.

#### Specification

Dimensions (h x w x d): *32 x 204 x 92 mm*

Weight: *87 g*

#### View of Mounting Bracket



#### Assembly Parts

ITEM	Q'TY	CODE	DESCRIPTION	VALUE, TYPE
	1	9450589	Mounting Bracket	
	1	9460124	Spacer	(6 pcs)
	3	6243225	Screw 2.9x22	DIN7981
	3	6293001	PT screw RB20x30	

## Handset Cradle CRE-1

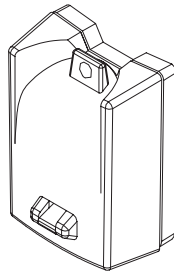
The cradle acts as a holder for the handset HSE-6XN.

### Specification

Dimensions (h x w x d): *81 x 57 x 37 mm*

Weight: *80 g*

### View of Handset Cradle



### Assembly Parts

ITEM	Q'TY	CODE	DESCRIPTION	VALUE, TYPE
	1	0650001	Handset Cradle CRE-1	

## Mounting Plate MKE-1

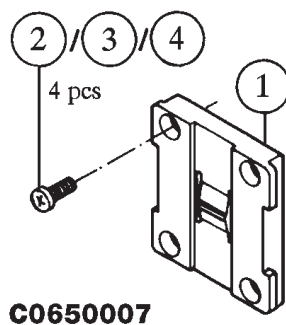
The MKE-1 mounting plate provides a method of fixing the handset cradle and the external SIM card reader to the vehicle interior.

### Specification

Dimensions (h x w x d): *7.3 x 45 x 48 mm*

Weight: *8 g*

### View of Mounting Plate



### Assembly Parts

ITEM	Q'TY	CODE	DESCRIPTION	VALUE, TYPE
1		9460016	Cradle adapter CRE-1	3D 21416
2	4	6270405	Screw 3.5 x 16	DIN7981 FeZn black
3	4	6150330	Screw M3 x 8	4D 22336
4	4	6292279	Screw KB30 x 10	

## Swivel Mounting Plate HHS-1

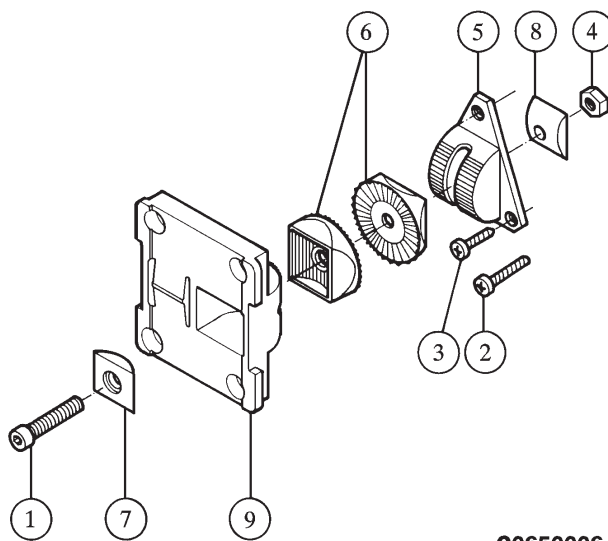
The HHS-1 swivel mounting plate provides an alternative (to MKE-1) method of locating the handset cradle.

### Specification

Dimensions (h x w x d): *20 x 44.5 x 48 mm*

Weight: *30 g*

### Exploded view of Swivel Mounting Plate



C0650006

### Assembly Parts

ITEM	Q'TY	CODE	DESCRIPTION	VALUE, TYPE
1		6190460	Screw M5 x 20	DIN912 FeZn 8.8 ye
2		6270405	Screw 3.5 x 16	DIN7981 FeZn black
3		6292279	PT screw KB30 x 10	WN1442 FeZn black
4		6310601	Nut M5	DIN934 FeZn yellow
5		9302119	Joint support	3D 20097
6	2	9302126	Joint part	3D 20098
7		9310261	Support bracket of screw	4D 20439
8		9310279	Support of nut	4D 20440
9		9450036	Cradle holder	2D 21419



## System Cable SCM-1/SCM-3

The system cable connects the phone to the vehicle supply and accessories.

### Specification

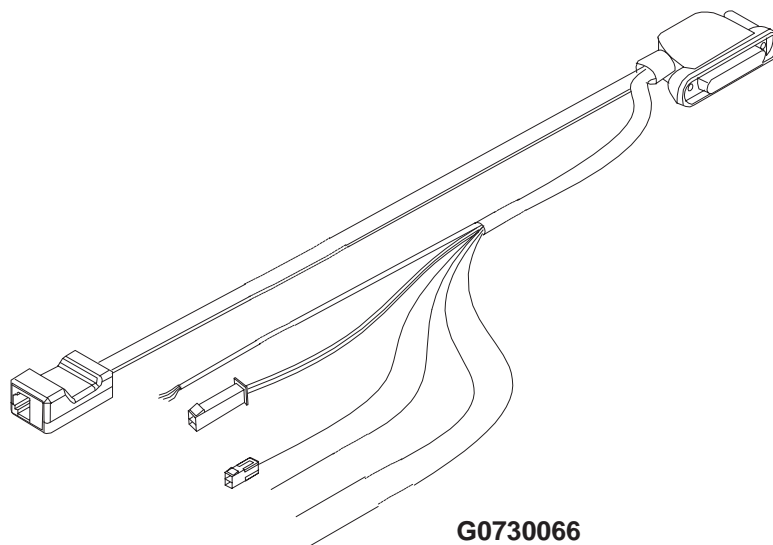
Connectors:

*25 pole DSUB female connector  
8 pole modular connector  
2 x molex mifit Jr. two way  
connector*

Wire connections:

*6 wires including:  
+12 V and GND for power supply  
IGNS for ignition sense  
CRM for car radio mute  
ANTC for motor antenna*

### View of System Cable



### Assembly Parts

ITEM	Q'TY	CODE	DESCRIPTION	VALUE, TYPE
		0730066	System Cable SCM-1	
		0730107	System Cable SCM-3	

## Vehicle Installation Cable DKS-3

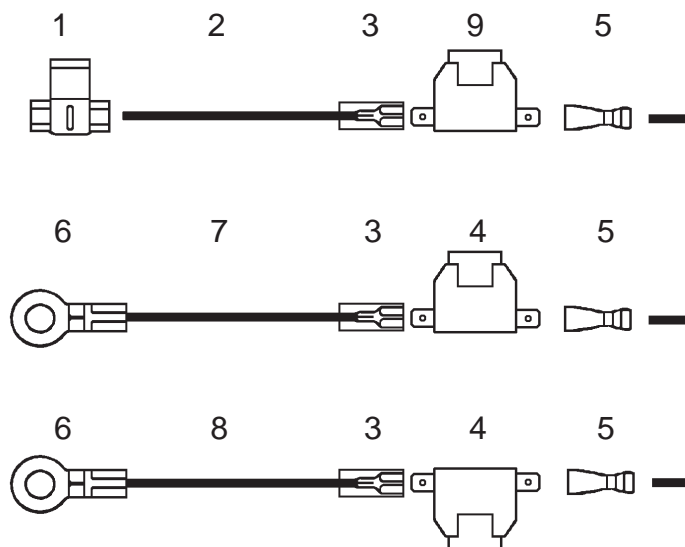
The vehicle installation cable connects the system cable to the vehicle supply and ignition sense.

### Specification

Fuse sizes:

3 A and 1 A

### View of Vehicle Installation Cable



### Assembly Parts

ITEM	Q'TY	CODE	DESCRIPTION	VALUE, TYPE
1			Tap splice	AMP 735410
2			Conductor 1 * AJ 1.5 mm <sup>2</sup>	300 mm 5 mm blue
3	3		Flat connector	AMP2-160256/ 926539-6
4	3		Fuse holder (pico fuse)	Littlefuse 445714/ 257003 (Fuse 3 A)
5	3		Flat connector	AMP KKA2507FLT
6	2		Cable shoe, M8	AMP 160337-2
7			Conductor 1 * AJ 1.5 mm <sup>2</sup>	300 mm 5 mm red
8			Conductor 1 * AJ 1.5 mm <sup>2</sup>	300 mm 5 mm black
9			Fuse holder (pico fuse)	Littlefuse 445714/ 257001 (Fuse 1 A)

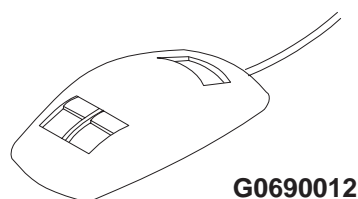
## Handsfree Microphone HFM-14

The HFM-14 microphone offers handsfree operation in the vehicle interior.

### Specification

Dimensions (h x w x d):	<i>16 x 24 x 43 mm</i>
Holders:	<i>double sided tape and screws</i>
Sensitivity curve:	<i>hypercardiod</i>
Bias supply voltage:	<i>1.5...8 V</i>
Bias supply current:	<i>100...500 <math>\mu</math>A</i>
Acoustical operating range (THD<1 %):	<i>35...110 dB SPL (-56...+16 dBa)</i>
Sensitivity:	<i>-41<math>\pm</math>4 dBV/Pa at 1 kHz, front signal (measured with mic assembled on hard plate, 30 x 30 cm)</i>
Noise (IHF-A weighting):	<i>&lt;9 <math>\mu</math>V</i>
Connector:	<i>molex microfit Jr. two way connector</i>
Cable length	<i>3<math>\pm</math>0.2 m</i>

### View of HFM-14



### Assembly Parts

ITEM	Q'TY	CODE	DESCRIPTION	VALUE, TYPE
		0690014	Handsfree Microphone HFM-14	

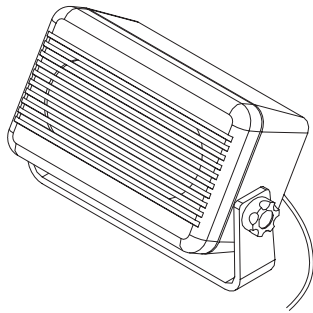
## Handsfree Speaker HFS-10

Small size, high quality loudspeaker for handsfree operation in vehicle installation.

### Specification

Dimensions (h x w x d):	<i>75 x 123 x 46 mm</i>
Weight:	<i>305 g</i>
Frequency range:	<i>0.25 to 3.5 kHz</i>
Sensitivity:	<i>82 ±3 dB</i>
Connector:	<i>molex minifit Jr. two way connector</i>
Length of cable:	<i>2 m</i>

### View of HFS-10



### Assembly Parts

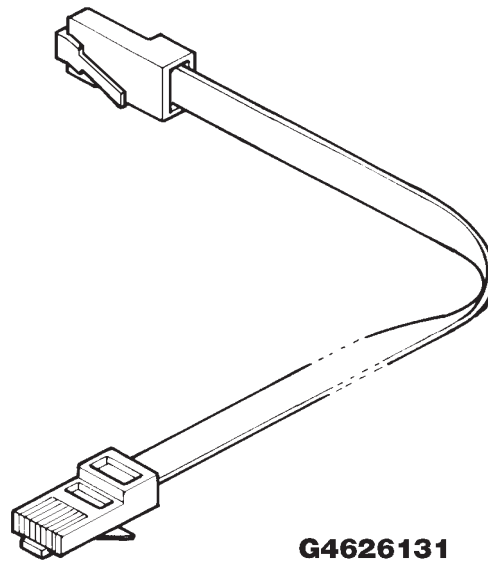
ITEM	Q'TY	CODE	DESCRIPTION	VALUE, TYPE
		0692006	Handsfree Speaker HFS-10	

## Extension Cable XCM-2

### Specification

Length of cable:	2m
Weight;	90g

### View of XCM-2

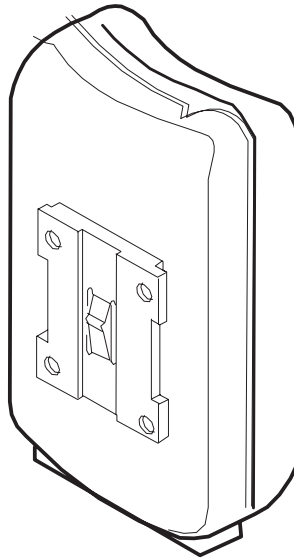


### Assembly Parts

ITEM	Q'TY	CODE	DESCRIPTION	VALUE, TYPE
		4624000	Extension Cable XCM-2	

## External SIM Card Reader CAE-2

### Specification



### View of CAE-2

#### Assembly Parts

ITEM	Q'TY	CODE	DESCRIPTION	VALUE, TYPE
		0630098	External SIM Card Reader CAE-2	

This page intentionally left blank.